

# SOUND System

## MAIN PA:

L cluster 12 x Outline SUPERFLY 6 x Outline Mantas 28 as downfill

R cluster 12 x Outline SUPERFLY 6 x Outline Mantas 28 as downfill

C mono fly subwoofer cluster 8 x Outline DBS-18-2

L/R ground 2 x 2 Outline DBS-18-2

## FILLS:

Infill/Fronfill 6 x Outline Mantas 28

Outfill L/R 2 x Outline SPECTRA2-9075 4 x VEGAS 12CX with wall bracket

## AMP/DRIVE RACK:

AMP 8 x POWERSOFT X8 (DANTE) = total 64 ch x 3000W/4Ohm

DSP: Outline NEWTON:

- 8 CH analog IN
- 16 CH AES/EBU I
- MADI BNC 64 CH
- MADI Optical 64 CH
- DANTE 64 CH
- 4 vnt Shure ULXD4Q radio microphones with Beta58 capsule

6 vnt active stage monitors (Amate audio X14T) + 2x Speaker Stand

6x Microphone stands

FOH Midas M32

Stagebox Midas DL32

**PRICE: 500 – 1500 + PVM**

**LIGHT**  
*System*

12 vnt Light Sky BSW F400

20 vnt Light Sky AURORA

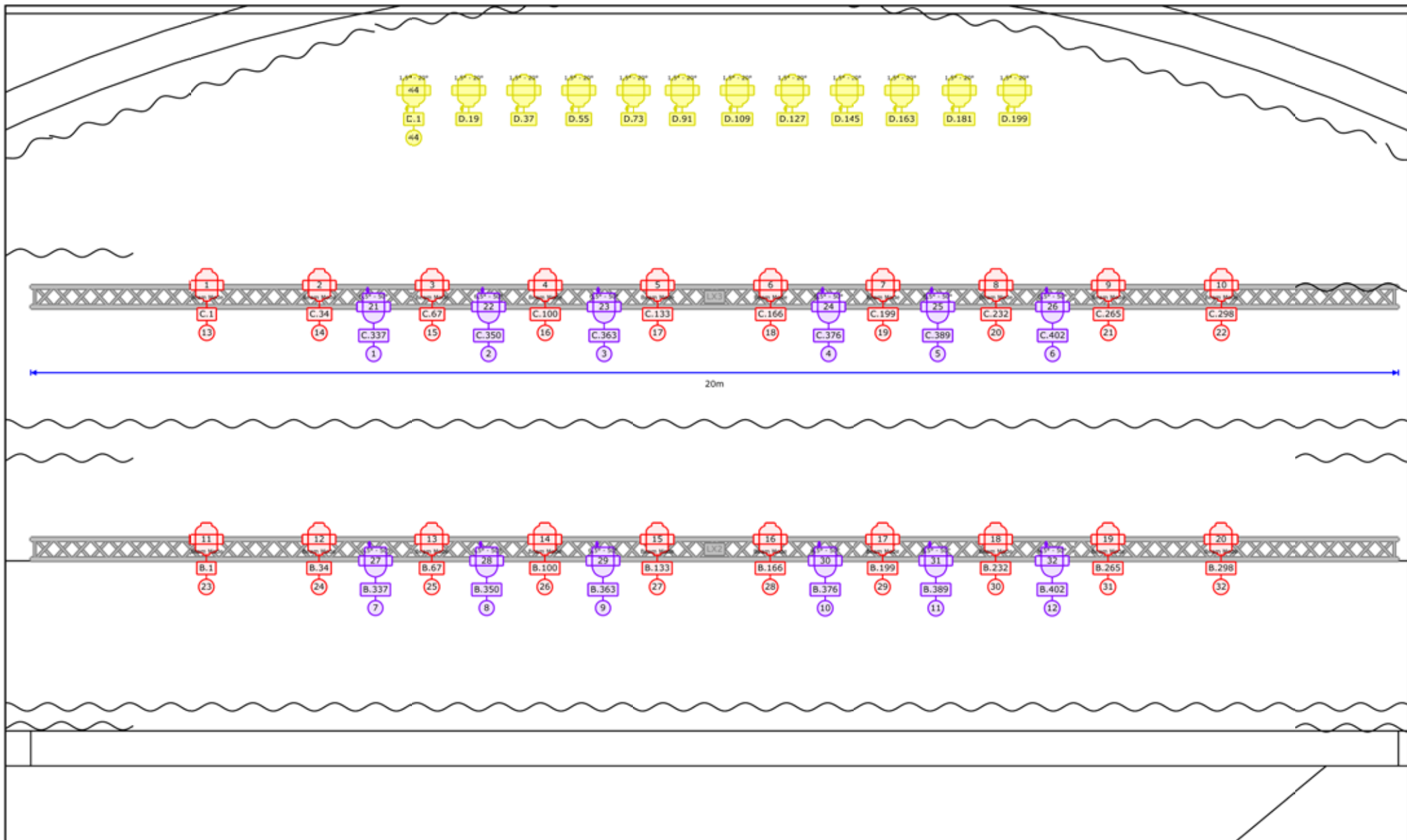
12 vnt Light Sky TX0760 ZOOM

8 vnt Light Sky L7-D48

1vnt Antari HZ500






Showtec NET-8/5

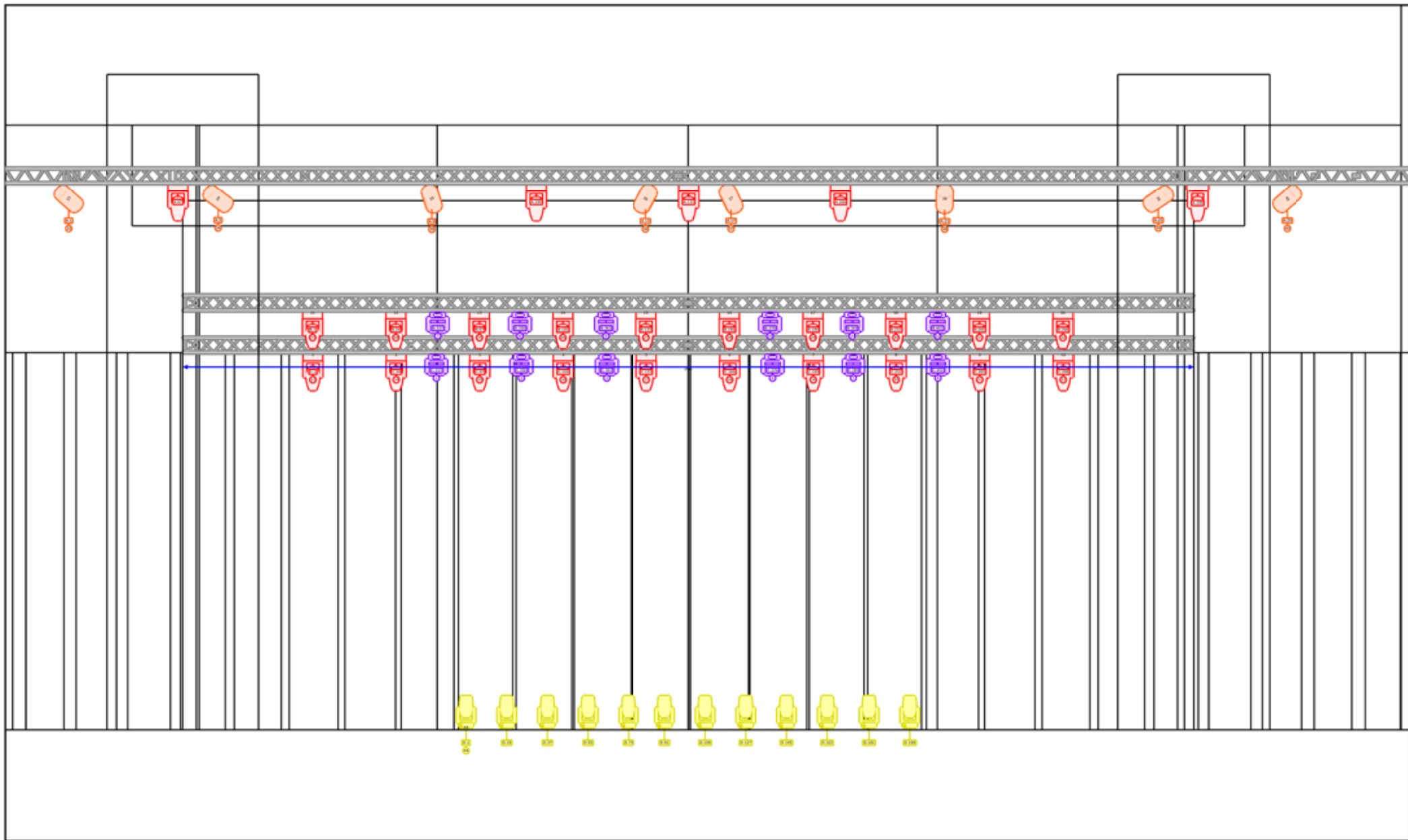
**PRICE: 500 – 1500 + PVM**



|                  |                          |
|------------------|--------------------------|
| Project          |                          |
| Project location | Palangos Koncertų Salė   |
| Drawing author   | Gintaras +370 699 73 465 |

**Symbol key**






|   |   |   |   |  |
|---|---|---|---|--|
|  Aurora (25) |  TX0760ZOOM (12) |  9800 L7-D48 (8) |  F400BSW (5) |  HZ-500 (1) |
|---|---|---|---|--|



|                  |                          |
|------------------|--------------------------|
| Project          |                          |
| Project location | Palangos Koncertų Salė   |
| Drawing author   | Gintaras +370 699 73 465 |



### Symbol key

-  Aurora (25)
-  TX0760ZOOM (12)
-  9800 L7-D48 (3)
-  F400BSW (5)
-  HZ-500 (1)



| Symbol key  |             |   |                 |   |                 |   |             |   |            |
|---|-------------|---|-----------------|---|-----------------|---|-------------|---|------------|
|  | Aurora (25) |  | TX0760ZOOM (12) |  | 9800 L7-D48 (8) |  | F400BSW (5) |  | HZ-500 (1) |

|                  |                          |
|------------------|--------------------------|
| Project          |                          |
| Project location | Palangos Koncertų Salė   |
| Drawing author   | Gintaras +370 699 73 465 |